

Village of Franklin Park



May 5, 2016

Crystal Creek Watershed Study





Presentation Overview

- Purpose of Study
- Watershed Overview
- IDNR-OWR Project Components
 - Lawrence Avenue Culverts
 - CP Railyard Culverts
 - Channel Improvements along Main Stem
 - Sexton Ditch Culverts
- Revised Floodplain Boundaries
- Permitting Timeline



Village Watershed Overview

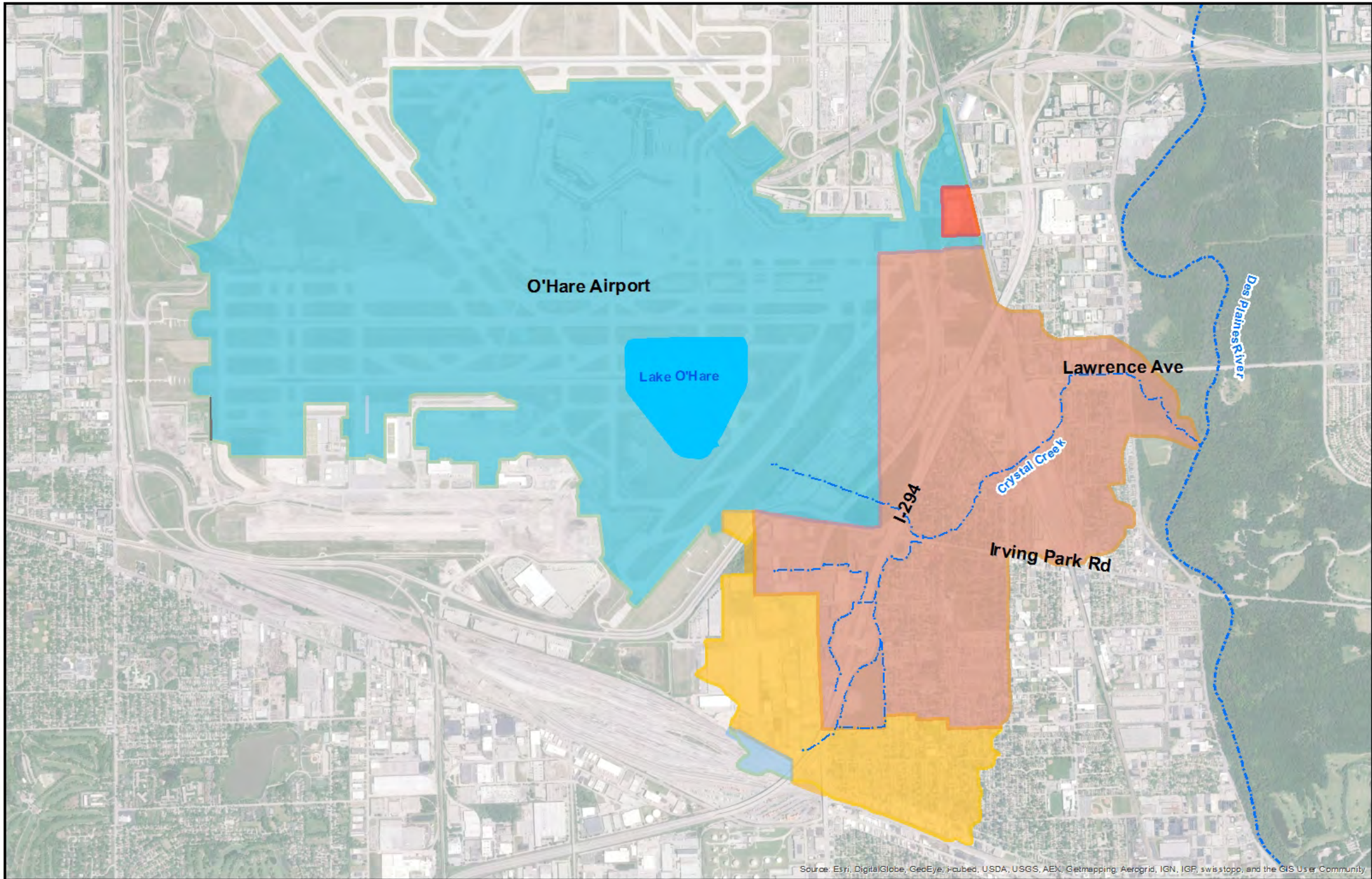
Village Area = 3,050 acres

- Village is tributary to 4 different streams:
 - Crystal Creek, Silver Creek, Addison Creek and Des Plaines River
- 340 acres (11%) of Village tributary to Crystal Creek

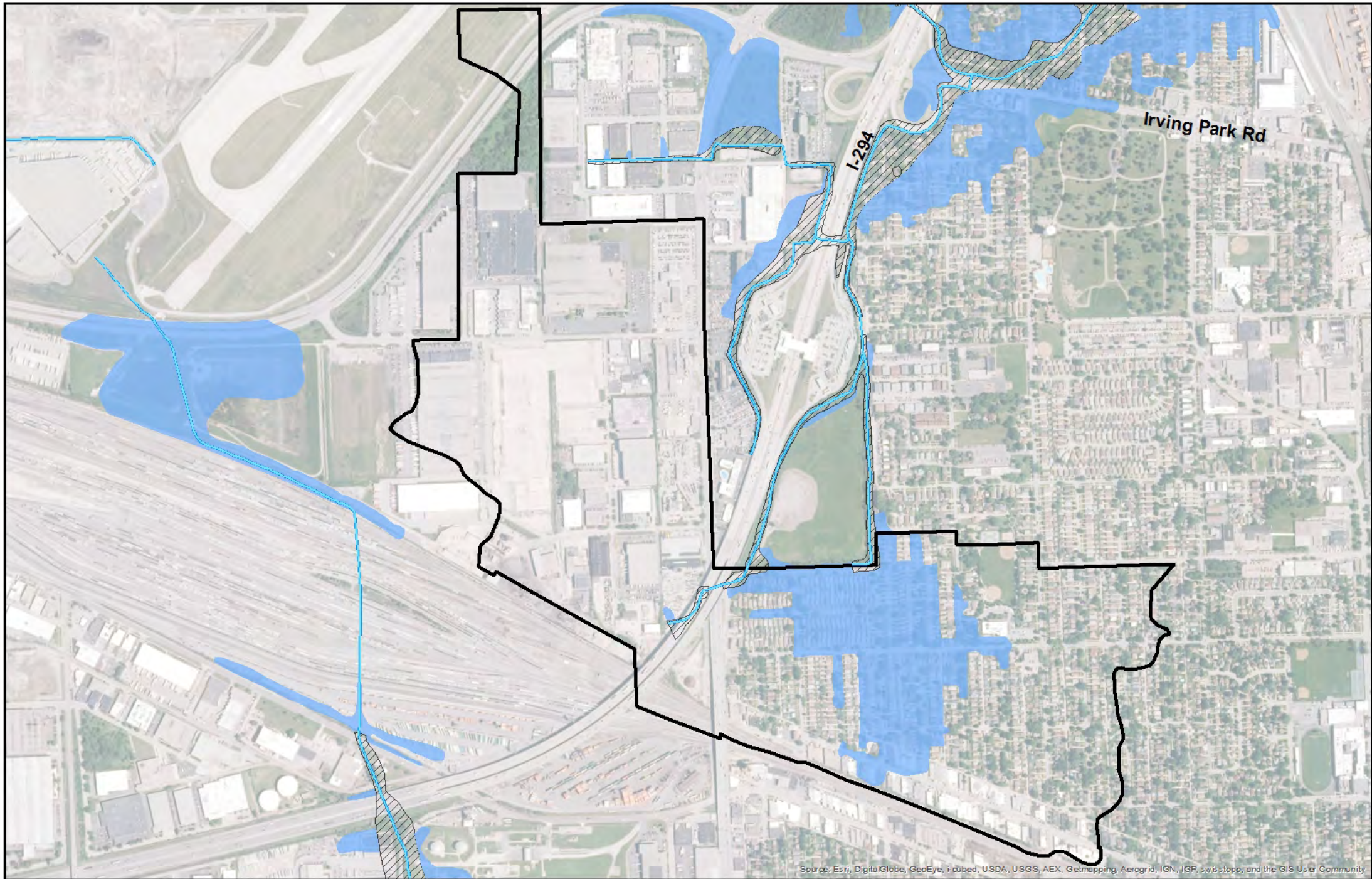


Crystal Creek Watershed Overview





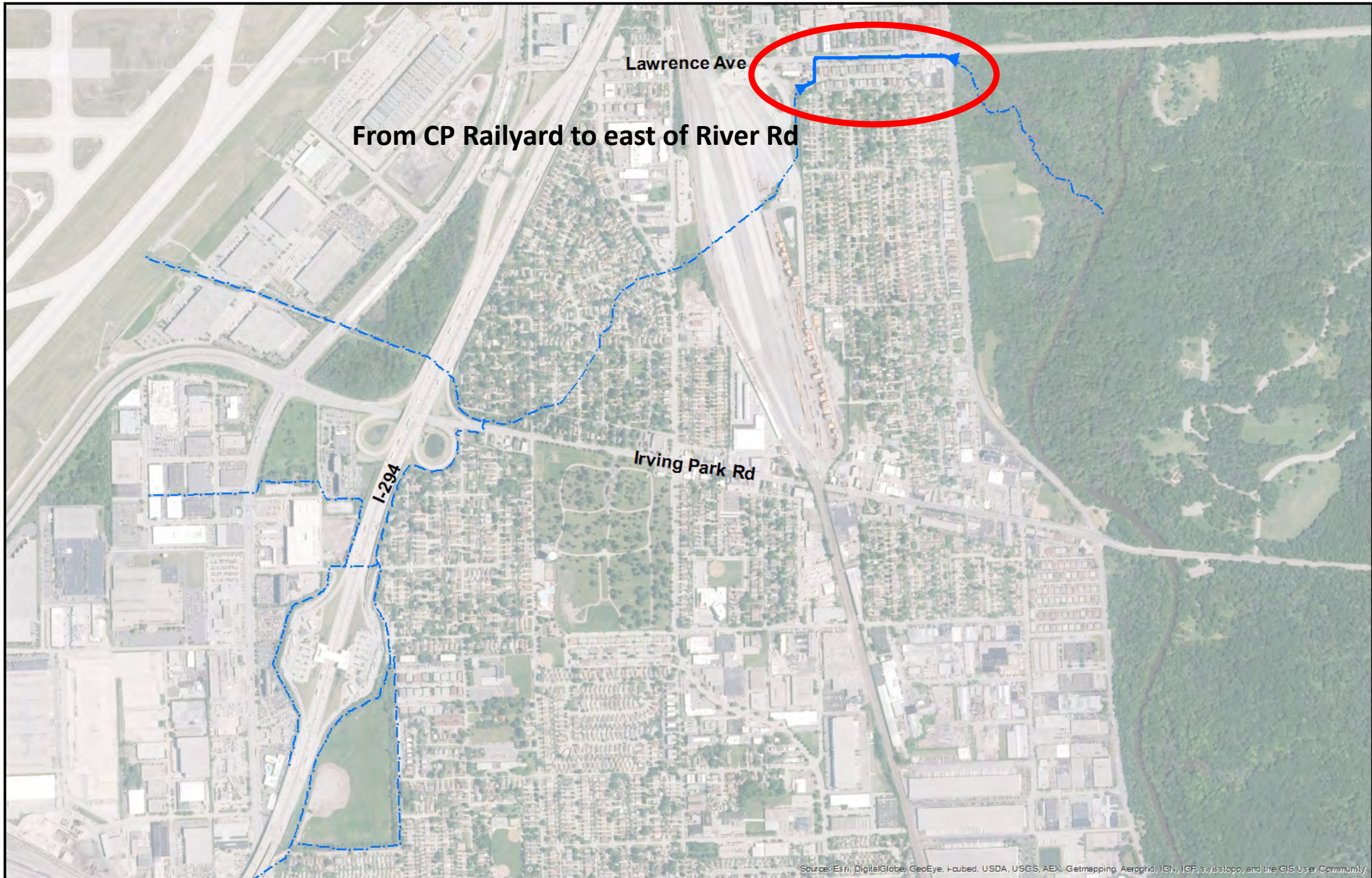
Source: Esri, DigitalGlobe, GeoEye, i-cubed, USDA, USGS, AEI, Getmapping, Aerogrid, IGN, IGP, swisstopo, and the GIS User Community





Between 1991 and 2014, IDNR-OWR designed and constructed 4 flood control projects

Goal: reduce repetitive flooding to the approximate 670 residential and commercial structures within the Crystal Creek Watershed



Lawrence Ave

From CP Railyard to east of River Rd

I-294

Irving Park Rd

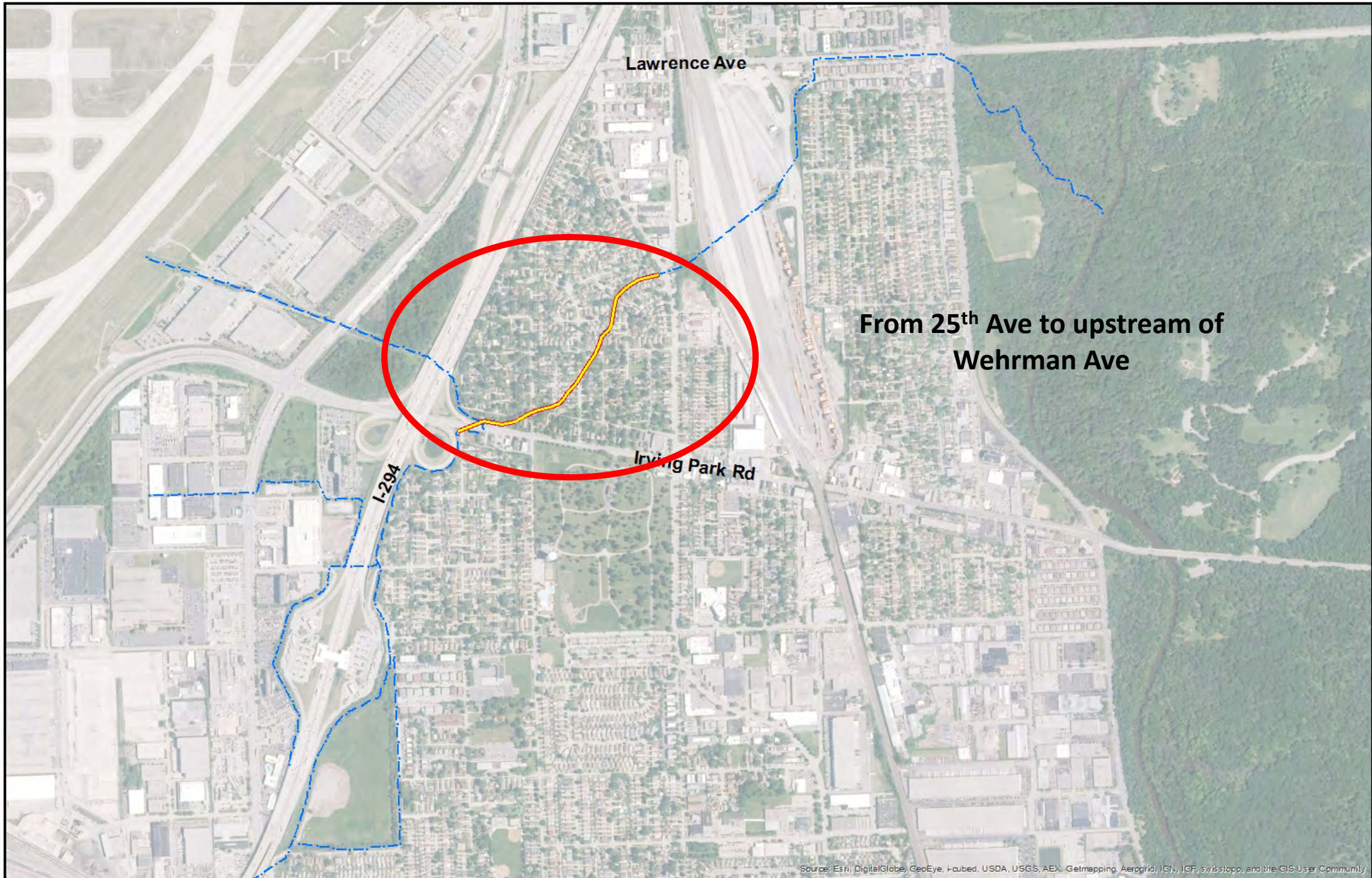


Lawrence Ave

Through CP Railyard

Irving Park Rd

I-294

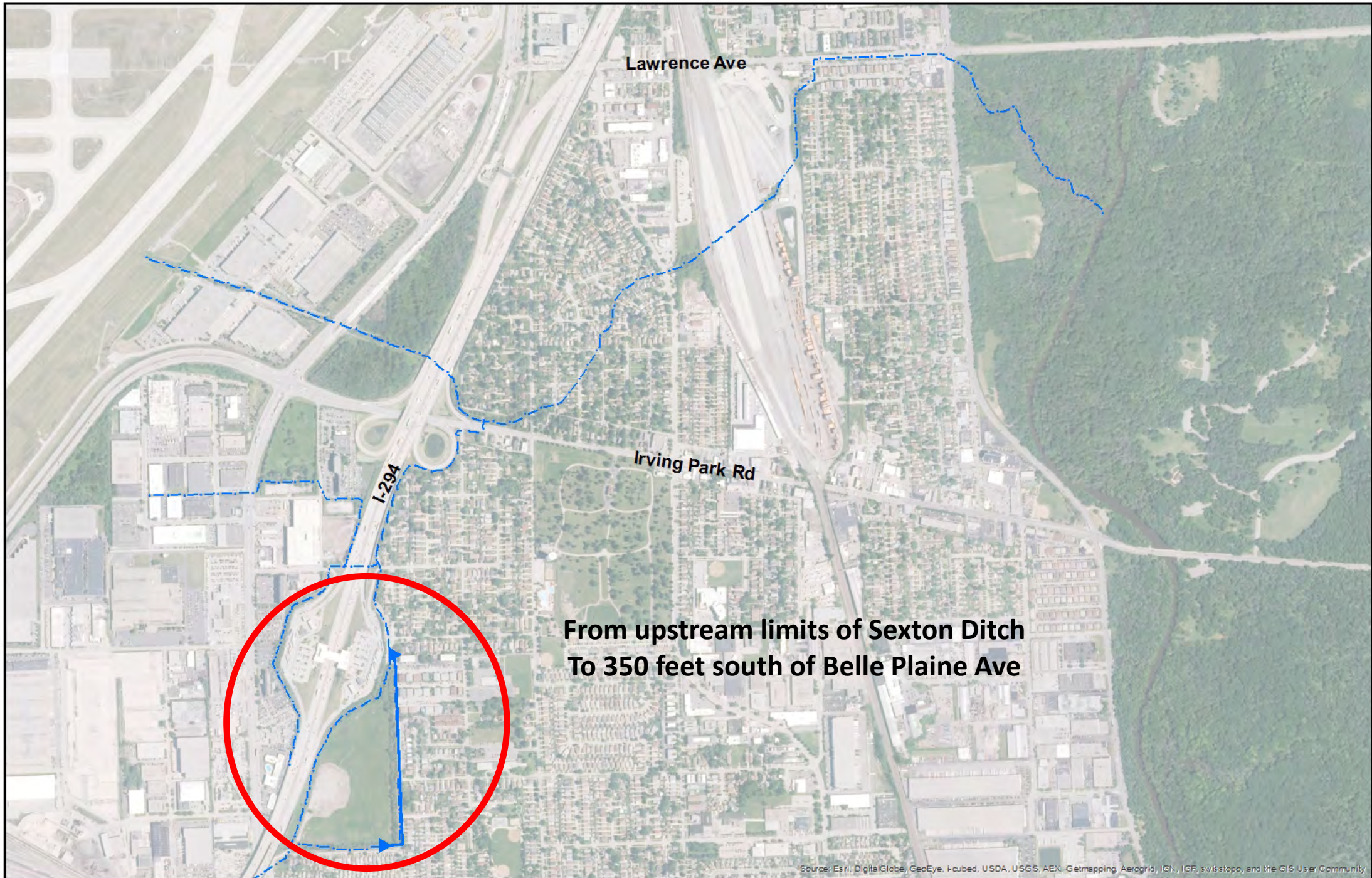


Lawrence Ave

From 25th Ave to upstream of Wehrman Ave

Irving Park Rd

I-294



Lawrence Ave

Irving Park Rd

I-294

From upstream limits of Sexton Ditch
To 350 feet south of Belle Plaine Ave



Project Schedule & Timeline

1. Submittal to IDNR-OWR for approval (June 2016 – 8 to 12 months)
2. Submittal to FEMA/ISWS for approval (following IDNR-OWR approval – 8 to 12 months)

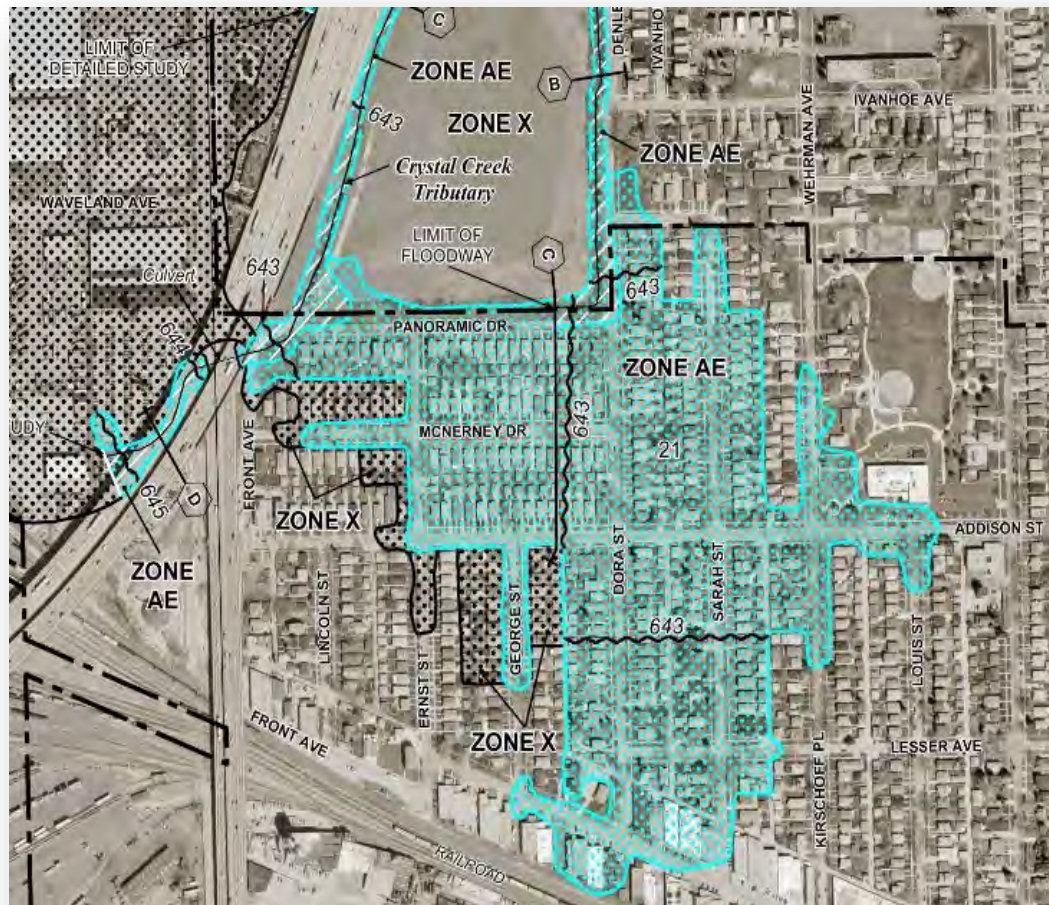


FEMA





LOMR proposes to remove 274 residential properties and 12 commercial properties within Franklin Park from 100-year floodplain



Crystal Creek Watershed Study



