



# How to Identify a Lead Water Service Line



# Identification Procedure

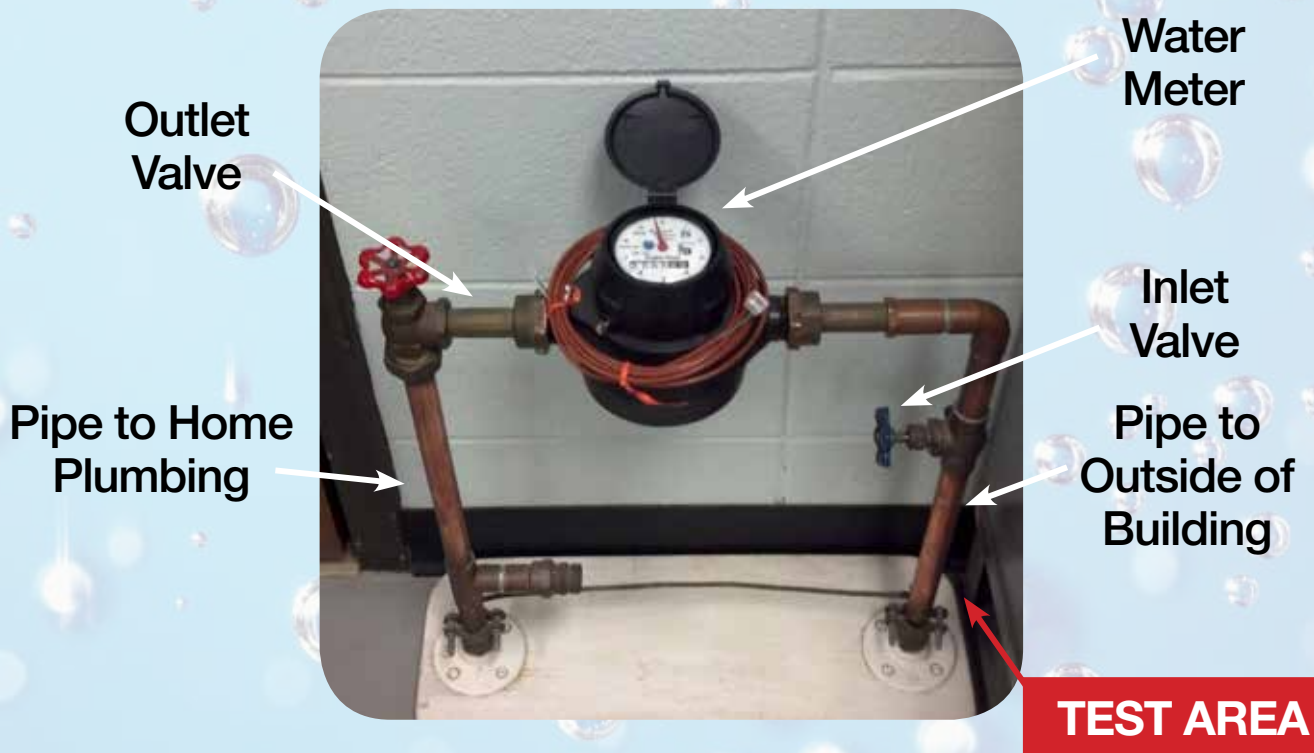
## Tools Needed:

Flathead Screwdriver  
Refrigerator Magnet

Locate the water service line coming into the building. This is typically found in the basement. An “inlet valve” and the water meter are installed on the pipe after the point of entry.

Identify a test area on the pipe between the point where it comes into the building and the inlet valve. If the pipe is covered or wrapped, expose a small area of metal.

Use the flat edge of a screwdriver or other tool to scratch through any corrosion that may have built up on the outside of the pipe.



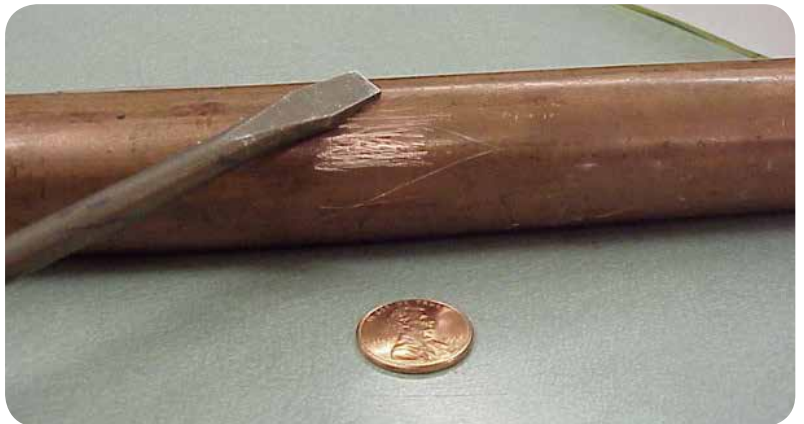
# Lead Pipe

If the scraped area is shiny and silver, your service line is lead. A magnet will not stick to a lead pipe.



# Copper Pipe

If the scraped area is copper in color, like a penny, your service line is copper. A magnet will not stick to a copper pipe.



# Galvanized Steel Pipe

If the scraped area remains a dull gray, and a magnet sticks to the surface, your service line is galvanized steel.

